

Miniature Recorders

# **Compact** **SERIES**

*Temperature Conductivity Depth*

Conductivity/Temperature Recorder

**COMPACT-CT**



Temperature/Depth Recorder

**COMPACT-TD**



**ALEC ELECTRONICS CO.,LTD.**

7-2-3 IBUKIDAI-HIGASHIMACHI, NISHI-KU,  
KOBE, JAPAN 651-2242

TEL +81 78-997-8686 FAX +81 78-997-8609

Web site [www.alec-electronics.co.jp](http://www.alec-electronics.co.jp)

E-mail [info@alec-electronics.co.jp](mailto:info@alec-electronics.co.jp)



# Compact SERIES

## Overview

The Compact Series instruments are small, highly accurate two-channel recorders for temperature-depth(TD) or conductivity-temperature(CT). Instrument programming and access to the recorded data is easily accomplished with a straightforward Windows software. The self-contained instruments are ideal for long-term moorings for up to two years and integrate easily into your application.

## Features

- Compact size
- High accuracy
- Direct digital output and programming via RS-232C
- Built in real time clock with ON/OFF power control
- Robust titanium housing
- Long-term deployments for up to two years
- Embedded micro-controller
- 16Mbits non-volatile flash memory, preventing data loss in case of power failure
- PC programmable measurement mode
- Powered by commercially available lithium batteries

## Specifications

### Conductivity/Temperature Recorder

#### COMPACT-CT

Parameters	Temperature	Conductivity
Sensor type	Thermistor	Inductive cell
Measuring range	-5 to 40 °C	0 to 60mS/cm
Resolution	0.001 °C	0.001mS/cm
Accuracy	+/-0.05 °C	+/-0.05mS/cm
Memory type	2MB flash memory	
Memory capacity	178439 data(123 days at 1min interval)	
A/D converter	16bits digital conversion	
Sampling interval	1sec, 1min, 2min, 10min	
Battery capacity	Lithium battery(CR2)/750mAh	
Power consumption	42mA	
Housing material	Titanium	
Weight	350g in air, 175g in water	
Depth rating	200m/2000m (option)	

### Temperature/Depth Recorder

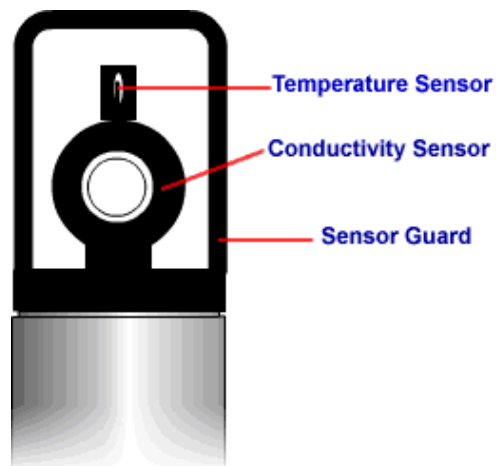
#### COMPACT-TD

Parameters	Temperature	Depth(Pressure)
Sensor type	Thermistor	Semi-conductor
Measuring range	-5 to 40 °C	Standard 40/100/200/500m Deep-sea 1000/2000m
Resolution	0.001 °C	Full Scale/65000
Accuracy	+/-0.05 °C	+/-0.3%FS
Memory type	2MB flash memory	
Memory capacity	178439 data(123 days at 1min interval)	
A/D converter	16bits digital conversion	
Sampling interval	1sec, 1min, 2min, 10min	
Battery capacity	Lithium battery(CR2)/750mAh	
Power consumption	35mA	
Housing material	Titanium	
Weight	Standard 500g in air, 265g in water Deep-sea 700g in air, 395g in water	
Depth rating	Corresponding to respective range	

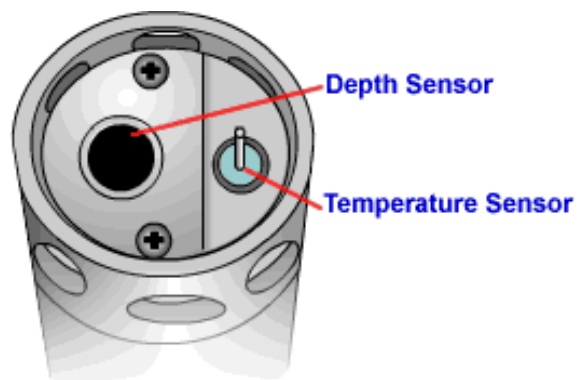
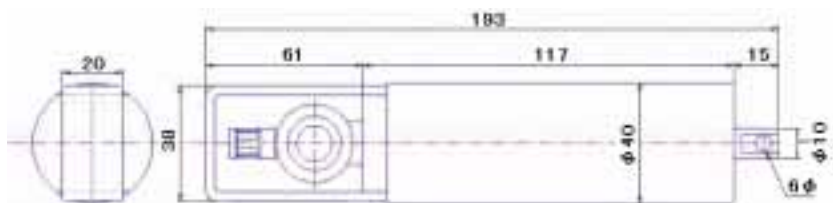
(Specify depth range when ordering)

*Note that specifications may be changed without prior notice.*

## Drawing



**CT**



**TD**

### Standard Version



### Deep-sea Version



# Data aquisition program

## Main Features

- 1.Communication with recorder  
(setting of measurement parameters)
- 2.Graphic and tabular display of data
- 3.Data conversion to text file
- 4.Output to printer



Data display

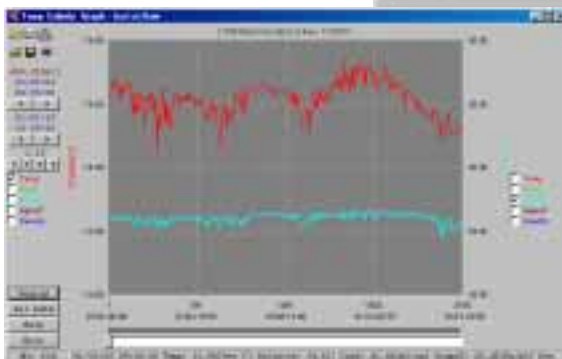


Communication menu screen



Set-up screen

- calendar
- parameter settings



Graphic display